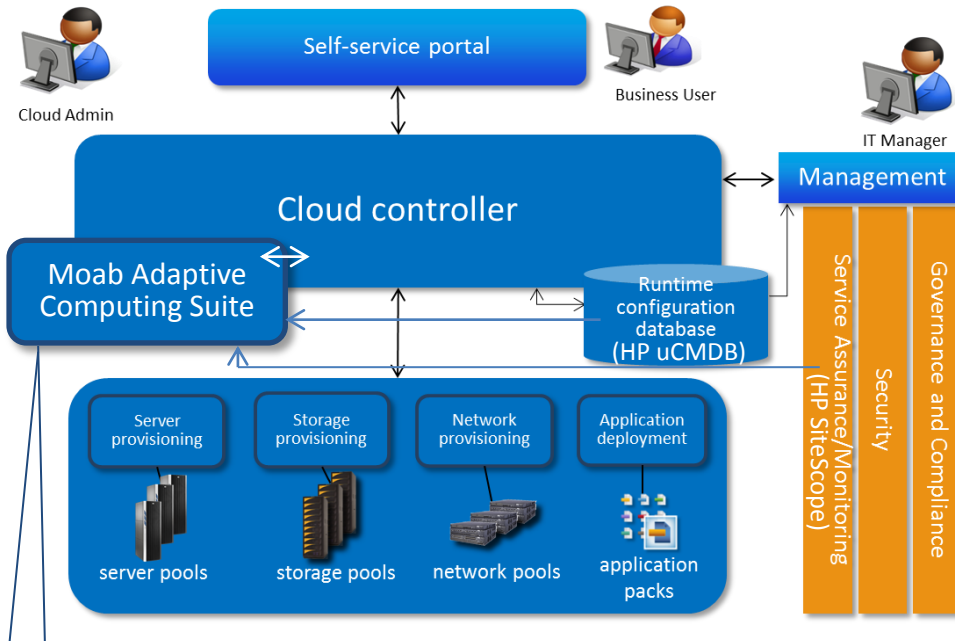


Moab Adaptive Computing Suite™ Integration with HP CSA Solution Architecture



Moab Adaptive Computing Suite:

- **Intelligence Engine:** *Dynamic resource allocation & service modification; decisions & policies*
- **Admin Dashboard:** *policies, reporting, management*
- **Showback & Chargeback**
- **Integration and data aggregation**

Integration Business Value Focus: Dynamically adapt cloud infrastructure to respond to changes in workload demand or resource conditions, optimize utilization/capacity and ensure quality of service and chargeback to the business.

Moab Adaptive Computing Suite:

- 1 **Consumes from HP CSA components**
 - Service request details from HP CSA Portal; resources, duration... (via CSA Controller)
 - Real-time resource status, availability, profile details from HP uCMB (direct), and/or HP Server Automation or HP SiteScope
- 2 **Uses data to make decisions and dynamic actions**
 - Billing & chargeback policies -usage cost calculation, budget limit, and chargeback
 - Scheduling & reservation policies
 - Dynamic resource allocation policies
 - VM usage policies
 - VM migration policies
 - SLA and resource sharing policies
 - Triggers for HP workflows to provision resources/change environment
- 3 **Provides to HP CSA components**
 - To CSA Portal (via CSA Controller): service cost/billing info from Gold
 - To HP Operations Orchestration (via CSA Controller): initiate resource provisioning workflows in optimal order– details for each resource as HP Operations Orchestration gets to that resource/stage